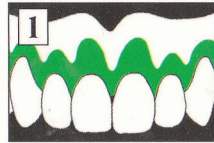


# enigma Colour Tone - Examples of Use

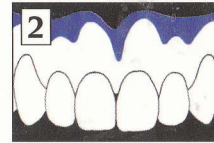
(Drawings are schematic and do not represent actual layer thickness.  
Read full directions before use)



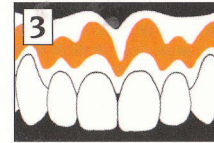
Three Colour on Enigma High-Base Pink Veined



(LP) Light Pink



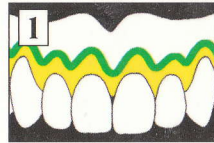
(DP) Dark Pink



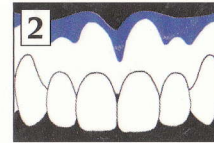
(NP) Natural Pink



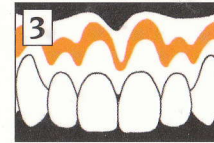
Four Colour on Enigma High-Base Pink Veined



(I) Ivory then  
(LP) Light Pink



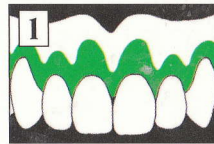
(DP) Dark Pink



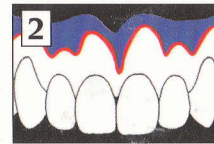
(NP) Natural Pink



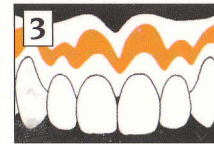
Brownish Pigmentation on Enigma High-Base Pink Veined



(LP) Light Pink



(DP) Dark Pink then  
(LB) Light Brown



(NP) Natural Pink



Three Colour on Enigma High-Base Translucent Veined



Four Colour on Enigma High-Base Translucent Veined



Dark Brownish Pigmentation on Enigma High-Base Pink Veined

Davis Schottlander & Davis Ltd,  
Letchworth, Herts, SG6 2WD England  
Tel:+44 (0)1462 480848 www.schottlander.com



Ivory



Light Pink



Natural Pink



Dark Pink



Light Brown

CE 0120

Products for better dentistry

*schottlander*